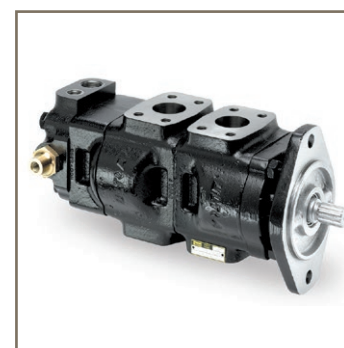
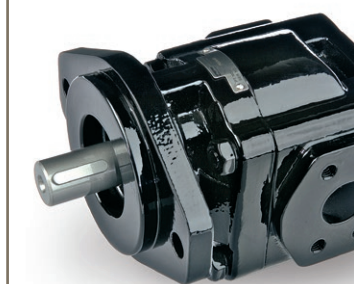


aerospace
climate control
electromechanical
filtration
fluid & gas handling
hydraulics
pneumatics
process control
sealing & shielding



Gear Pumps/Motors

Robust and quiet pumps and motors for demanding applications



www.parker.com



European Headquarters
La Tuilière 6, 1163 Etoy,
Switzerland
Tel: +41 21 821 85 00

Your authorized Distributor



ENGINEERING YOUR SUCCESS.

High performance gear pumps and motors

Outstanding reliability for demanding applications

Parker’s gear pumps and motors are ideal for many demanding applications. They maintain the same superior performance all through their long, trouble-free service life. Our state-of-the-art Series 600 cast iron pumps and motors offer a unique inter-

locking design of the flange and the bell housing. This feature enables exceptionally high efficiency at noise levels far below those of conventional designs. The compact, flexible design also offers alternatives such as multiple pumps with

common inlet port, integrated valves and combinations with pumps from our wide range of piston pumps. Whatever your needs, there is always a Parker pump or motor that’s right for you!



Parker’s gear pumps deliver! The wide range of sizes, configurations and options cover any need.

Series	Displacement	Max. Pressure	Max. Speed
PGP/M620	16-52 cc/rev	275 bar	3500 rpm
PGP/M640	30- 100 cc/rev	310 bar	3000 rpm
PGP/M511	6-33 cc/rev	250 bar	5000 rpm
PGP517	14-70 cc/rev	250 bar	3400 rpm



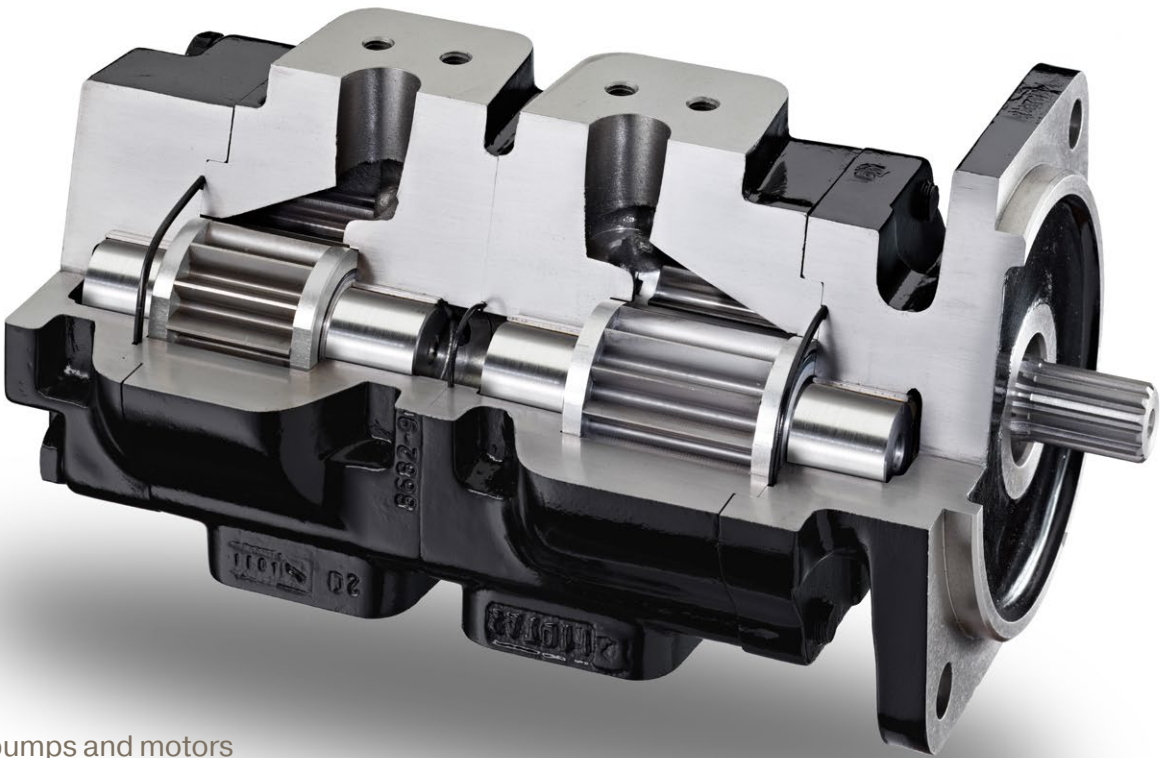
Our durable hydraulic pump/ motor systems can be found in most leading brands of telehandlers – as is the case with many types of mobile machines all over the world.

TYPICAL DEMANDING APPLICATIONS:

- Wheel loaders
- Agriculture Airseeder
- Backhoe loaders
- Forklifts
- Telehandlers
- Drill rigs

FEATURES:

- Interlocking Cast Iron
- Compact & 310 bar
- Full Valve program
- Life time > 1 mio. cycle



Parker’s gear pumps and motors are available as single, multiple, piggyback and drive-thru-assemblies. Parker’s robust, easily installed gear pumps and motors are well suited for many high performance applications. They are available with or without integrated valves for maximum flexibility.

BENEFITS:

- Easy to install
- High efficiency
- Higher durability
- Multiple pumps
- Long service life
- Cost effective

Thanks to their high efficiency and reliability, Parker gear pumps are highly sought after for wheel-loader use. Our fan drive motors make sure the machines run cool and trouble free.



Fork lift trucks and street maintenance vehicles are ideal applications for Parker’s reliable gear pumps.

