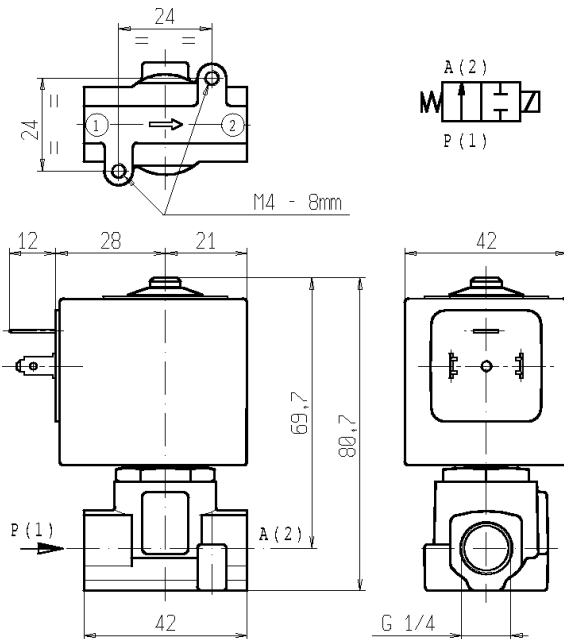




2/2 - SOLENOID VALVE - Normally open (N.O.)
Series L255 - Coil Z110A - G 1/4

ISO 9001



FEATURES - Direct acting solenoid valve, designed to shut off liquid and gaseous media compatible with the valve materials.

MOUNTING - In any position, vertical with coil upwards preferred.

VALVE - Brass body. Internal parts in stainless steel. Seals as per table. Models with seat in stainless steel. Medium temperature from 0°C to 130°C (FPM), from -10°C to +170°C (Ruby). Viscosity max 5°E (~37cStokes or mm²/s). Opening time ~30ms. Closing time ~30ms.

COIL - Rated for continuous duty in AC (alternate current) or DC (direct current). Coil in class "F" (+155°C) wound by class "H" wires (+180°C) vacuum impregnated by polyester resin and encapsulated into glass fibre reinforced PBT (polybutylene-terephthalate).

Ambient temperature from -10°C to +60°C.

Standard voltages 24/50Hz-110/50Hz (120/60Hz)-220/50Hz (240/60Hz)-230V/50Hz and 12-24 V DC

Voltage tolerance +10% -15% AC and +10% -5% DC.

Electric plug connection (DIN 46340) or suitable for 3 poles connectors (DIN 43650).

Protection degree IP65 as per EN 60529 if the coil is duly fitted with its plug connector.

Port size ISO-228	Orifice size (mm)	Max pressure (bar)				Kv (m ³ /h)	Series and type		Power absorption			Seals	Notes	Weight (kg)
		Gases		Liquids			Valve	Coil	AC (VA)		DC (W)			
		AC	DC	AC	DC				Inrush	Holding				
G1/4	3,2	10	10	8	8	0,30	L255C01	Z110A	44	24	13	RUBY	1-2-3	0,490
		12	12	10	10		L255V02							
	4,5	5	5	4	4		0,45							

NOTES - Seal: RUBY = Synthetic corundum FPM = Fluoro-carbon elastomer

- Other voltages and frequencies on request.

- The use of rigid sealings with gaseous fluids implies a slight leakage, generally limited with in 2 scc/min at 1 bar pressure.

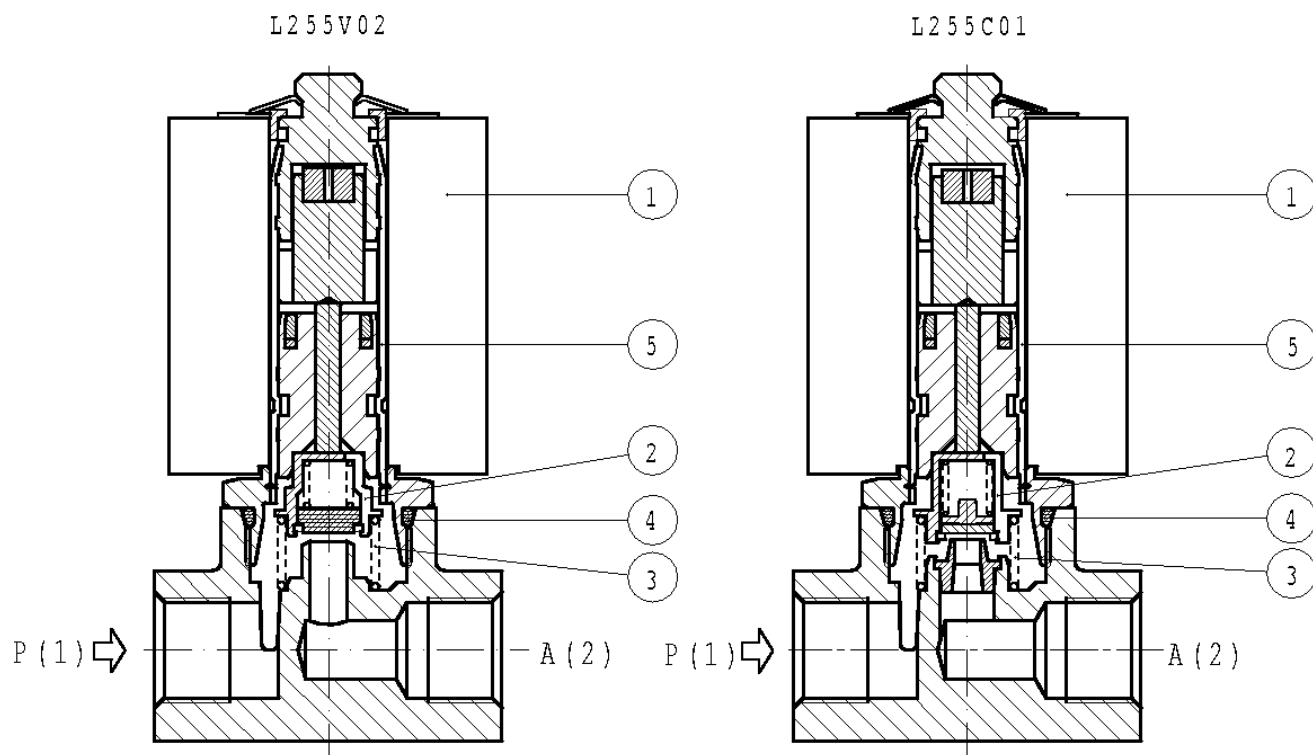
1 - Stainless steel seat. Suitable for steam up to 170°C (maximum pressure 8 bar).

2 - On request coil type Z114A encapsulated in PPS (polyphenylene-sulfide) class "H" (+180°C) maximum ambient temperature +80°C.

3 - Gasket between core armature and body in FPM.

SPARE PARTS

Series L255



Kit Description

Kit P.N.

Consisting of:

Core sealing assembly kit L255C01	G3006801	Sealing group pos. 2 Sealing return spring pos. 3
Core sealing assembly kit L255V02 Ø 3,2	G3008402	Sealing group pos. 2 Sealing return spring pos. 3
Core sealing assembly kit L255V02 Ø 4,5	G3008401	Sealing group pos. 2 Sealing return spring pos. 3
Sealing return spring kit L255C01	G3007201	N° 10 sealing return spring pos. 3
Sealing return spring kit L255V02 Ø 3,2	G3006901	N° 10 sealing return spring pos. 3
Sealing return spring kit L255V02 Ø 4,5	G3006301	N° 10 sealing return spring pos. 3
OR guide assembly kit	GU2424000017	N. 10 OR guide assembly pos. 4
Guide pipe assembly	3005301	Guide pipe assembly pos. 5
Coil Z110A		Coil pos. 1

NB - THE VALIDITY OF REPORTED DATA IS REFERRED TO THE DATE OF ISSUE. POSSIBLE UPDATING ARE AVAILABLE ON REQUEST