



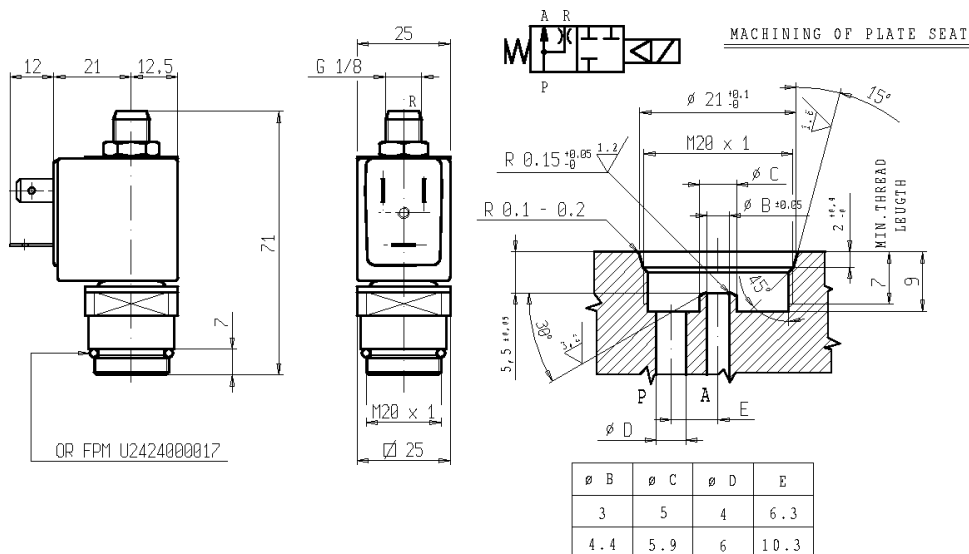
2/2 - ACTUATOR - Normally open (N.O.)

Series L202V03 - Coil Z610A

L202V03

Plug-in model

ISO 9001



NON STANDARD

FEATURES - Indirect acting piston actuator. Designed to be plugged in a plate or directly in the user or in valves bodies supplied separately (see overleaf). Suitable to shut off liquid and gaseous media compatible with the valve materials. Minimum operating pressure is needed.

MOUNTING - In any position, vertical with coil upwards preferred.

VALVE - Brass body. Internal parts in stainless steel. Piston in aluminium alloy UNI 6362 chemically nickel plated (Ni-P). Medium temperature from 0°C to +130°C. Viscosity max 5°E (~37cStokes or mm²/s). Opening time ~15ms. Closing time ~15ms.

COIL - Rated for continuous duty in AC (alternate current) or DC (direct current). Coil in class "F" (+155°C) wound by class "H" wires (+180°C) vacuum impregnated by polyester resin and encapsulated into PBT (polybutylene-terephthalate).

Ambient temperature from -10°C to +60°C.

Standard voltages 24-110-230V/50-60Hz AC and 12-24V DC.

Voltage tolerance +10% -15% AC and +10% -5% DC.

Electric plug connection (DIN 46340) or suitable for 3 poles connectors.

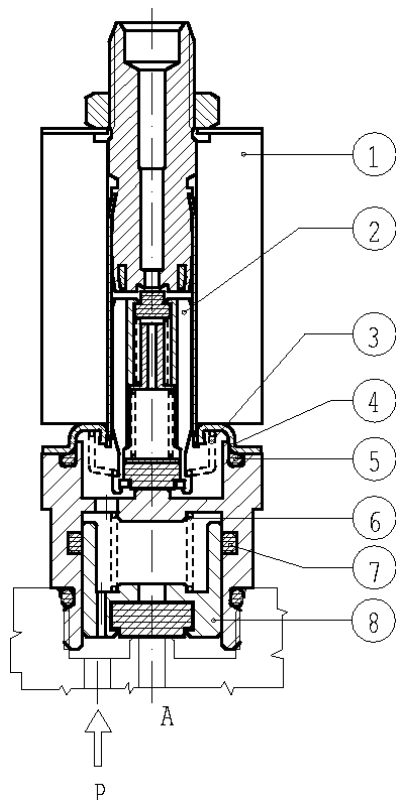
Protection degree IP65 as per EN 60529 if the coil is duly fitted with its plug connector.

Port size ISO R262	Orifice size (mm)	Min P (bar)	Max pressure (bar)				Kv (m ³ /h)	Series and type		Power absorption			Seals	Notes	Weight (kg)
			Gases		Liquids			Valve	Coil	AC (VA)		DC (W)			
			AC	DC	AC	DC				Inrush	Holding				
M20X1	3	0,8	15	15	15	15	0,25	L202V03	Z610A	16	10	6	FPM	1	0,160
	4,4		0,4	2											

- NOTES**
- Seal: FPM = Fluoro-carbon elastomer
 - Other voltages and frequencies on request.
 - In case of disassembling of the coil, the fixing nut has to be tightened at 3 Nm max torque.
 - The max torque of actuator is 6 Nm when installed either in valve body or directly in the equipment.
 - 1 - Body valve fittings kit (G3033801) on request (see overleaf). A different machining of installation plate is needed for this kit.
 - 2 - Body valve fittings kit (G3033901) on request (see overleaf). A different machining of installation plate is needed for this kit.

SPARE PARTS

Series L202v03



Kit description

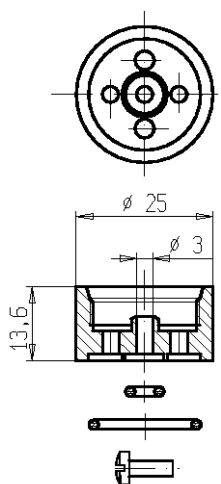
Kit P.N.

Consisting of:

Core kit	G294702	Core pos. 2 O-ring guide pipe assembly pos. 5
Return spring kit for sealing element	G3064401	N. 10 Return spring pos. 6
Core return spring kit	G2926801	N. 10 core return spring pos. 3
Spares kit for sealing element	G3064101	Sealing element pos. 8 O-ring pos. 7
O-ring guide pipe assembly kit	GU2424000017	N. 10 O-ring guide pipe assembly pos. 5
Guide pipe assembly	2973101	Guide pipe assembly pos. 4
Coil Z610A		Coil pos. 1

NON STANDARD

FITTINGS KIT FOR VALVE BODIES



FITTINGS KIT G3033801

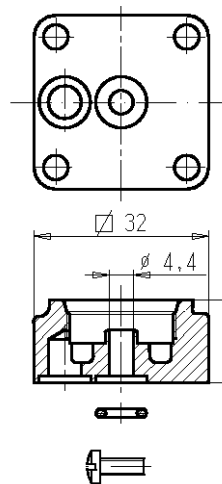
Consisting of:

3034601
Body (weight kg 0,030)

U2424000004 N° 1 O-ring

U2424000017 N° 1 O-ring

U2122030080 N° 2 Screw M3x8



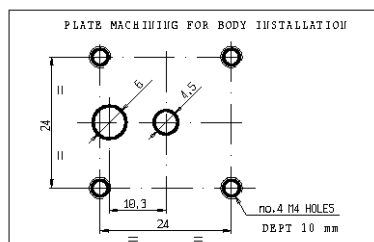
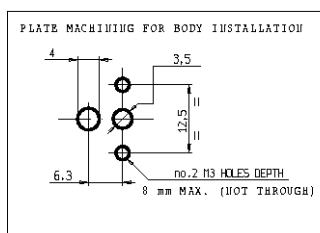
FITTINGS KIT G3033901

Consisting of:

3034701
Body (weight kg 0,030)

U2424000007 N° 2 O-ring

U2122040140 N° 4 Screw M4x14



NB - THE VALIDITY OF REPORTED DATA IS REFERRED TO THE DATE OF ISSUE. POSSIBLE UPDATING ARE AVAILABLE ON REQUEST