



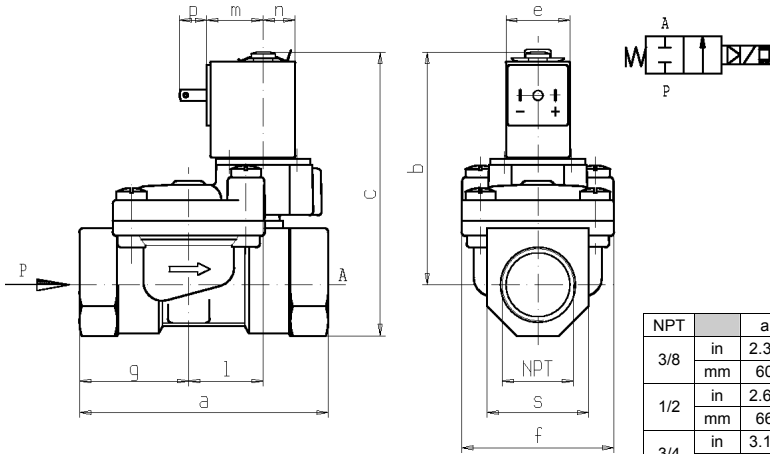
2/2 - SOLENOID VALVE

Series **L180B35** - Coil Z070A - NPT 3/8 ÷ 1

L180B35

LATCHING MODEL

ISO 9001



NPT		a	b	c	e	f	g	l	m	n	p	s
3/8	in	2.36	2.26	2.75	0.67	1.57	1.00	0.79	0.6	0.33	0.28	0.87
	mm	60	57.5	70	17	40	25.5	20	15	8.5	7.2	22
1/2	in	2.60	2.36	2.93	0.67	1.57	1.14	0.79	0.6	0.33	0.28	1.06
	mm	66	60	74.5	17	40	29	20	15	8.5	7.2	27
3/4	in	3.11	2.60	3.29	0.67	1.97	1.40	0.96	0.6	0.33	0.28	1.30
	mm	79	66	83.5	17	50	35.5	24.5	15	8.5	7.2	33
1	in	4.13	3.17	4.02	0.67	2.80	1.81	1.10	0.59	0.33	0.28	1.65
	mm	105	80.5	102	17	71	46	28	15	8.5	7.2	42

FEATURES - Full orifice solenoid valve, pilot operated. Suitable to shut off liquid and gaseous media compatible with the valve materials.

MOUNTING - In any position, vertical with coil upwards preferred.

VALVE - Brass body. Internal parts in brass and stainless steel. Guide assembly in stainless steel. Seals as per table. Max viscosity $\sim 3.98 \times 10^{-4} \text{ ft}^2/\text{sec}$ ($\sim 37\text{cStokes}$ or mm^2/s , 5° E). Medium temperature from 14°F to $+194^\circ\text{F}$. Opening time from $\sim 300\text{ms}$ to $\sim 1500\text{ms}$. Closing time from $\sim 1000\text{ms}$ to $\sim 1500\text{ms}$.

COIL - Latching model, polarized type only in DC (direct current). Operating with impulses. Minimum energizing time: see table overleaf. Coil in class "A" (227°F) wound by wires in class "H" (356°F) vacuum impregnated by polyester resin and encapsulated into glass fibre reinforced PP-V0 (self-extinguishing Polypropylene).

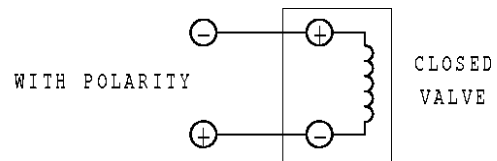
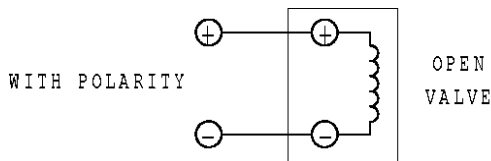
Ambient temperature from 14°F to $+140^\circ\text{F}$.

Standard voltages 6-12 V DC

Voltage tolerance $+10\%$ -10% DC.

Electric plug connection (DIN 46340) or suitable for micro-connectors.

Protection degree IP65 as per EN 60529 if the coil is duly fitted with its plug micro-connector.



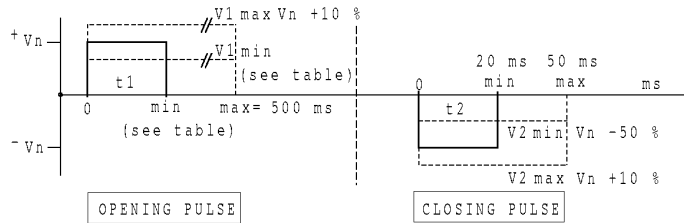
Port size NPT	Orifice size (ins.)	Pressure differential (psi)				Cv (GPM)	Series and type		Power absorption			Seals	Notes	Weight (lbs)	
		ΔP min	ΔP max				Valve	Coil	AC (VA)		DC (W)				
			Gases		Liquids				Inrush	Holding					
			AC	DC	AC										DC
3/8	29/64	5.08	-	174	-	174	L180B35	Z070A	-	-	3	NBR	-	0.750	
1/2	17/32													4.45	0.840
3/4	45/64													5.85	1.150
1	61/64													12.87	2.430

- NOTES**
- Operation with gaseous media, at high pressure without any outlet restriction, can reduce the diaphragm life.
 - Seal: NBR = Nitrile-butylene elastomer
 - Other voltages on request.

NON STANDARD

9707/0204

MINIMUM CONDITIONS REQUIRED FOR OPENING											
VALVE		$\Delta P \emptyset$		$\Delta P 25\%$		$\Delta P 50\%$		$\Delta P 75\%$		$\Delta P 100\%$	
Model	Coil	t1	V1	t1	V1	t1	V1	t1	V1	t1	V1
L180B35	Z070A (3 W)	16ms	Vn -55%	16ms	Vn -40%	20ms	Vn -30%	20ms	Vn -20%	20ms	Vn -10%

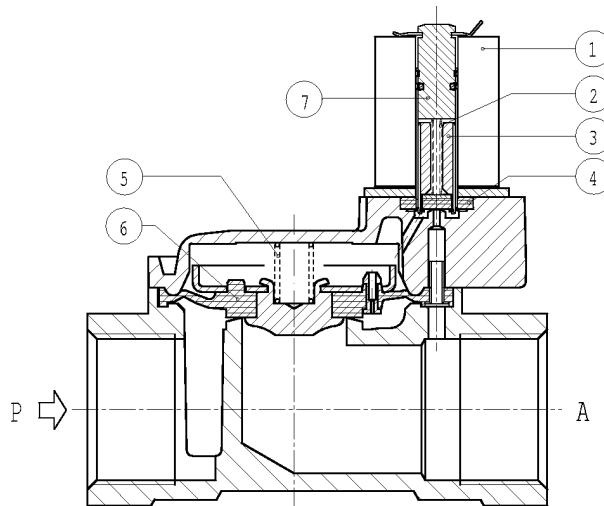


Vn = coil voltage

t1 : t2 = pulse duration (square wave)

SPARE PARTS

Séries L180B35



NON STANDARD

Kit description

Kit P.N.

Consisting of :

Core kit

G2905101

Core pos.3
Core return spring pos.2
OR guide assembly pos.4

Core return spring kit

G2786401

N.10 Core return springs pos.2

Spring on diaphragm kit

3/8
1/2
3/4
1

G2424101
G2831901
G1844501
G2380201

N.10 spring on diaphragm pos.5

OR guide assembly kit

GU2421000121

N.10 OR guide assembly pos.4

Diaphragm kit

3/8
1/2
3/4
1

2782501
2844302
2299701
2380101

Diaphragm assembly pos.6

Guide pipe assembly

2894201

Guide pipe assembly pos.7

Coil Z070A

Coil pos. 1

NB - THE VALIDITY OF REPORTED DATA IS REFERRED TO THE DATE OF ISSUE. POSSIBLE UPDATING ARE AVAILABLE ON REQUEST