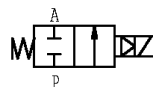
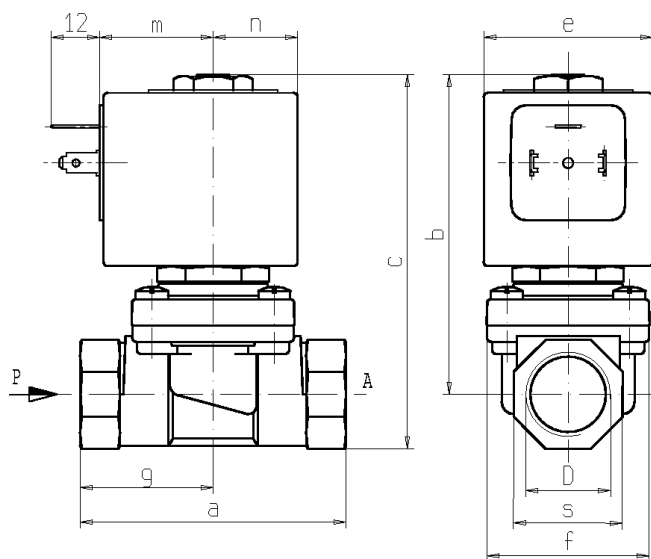




2/2 - SOLENOID VALVE - Normally closed (N.C.)
Series L153 - Coil Z114A - Z914A G 1/2 - 3/4 - 1

ISO 9001



| D | a | b | c | e | f | m | n | s | g |
|-------|-----|------|-------|------|----|----|------|----|----|
| G 1/2 | 66 | 79,5 | 93 | 42 | 41 | 28 | 21 | 27 | - |
| G 3/4 | 79 | 84,5 | 101,5 | 42 | 51 | 28 | 21 | 33 | - |
| G 1 | 105 | 105 | 126 | 48,6 | 71 | 35 | 24,3 | 42 | 46 |

FEATURES - Pilot operated solenoid valve with forced lifting diaphragm and full orifice, it operates at "zero-pressure" conditions. Designed to shut off overheated water, steam and other liquid and gaseous media compatible with the valve materials

MOUNTING - In any position, vertical with coil upwards preferred.

VALVE - Brass body, with seat in stainless steel. Diaphragm in PTFE (Polytetrafluorethylene) with plunger seal in EPDM; other internal parts in brass and stainless steel. Max temperature for overheated water and steam: +140°C. Viscosity max 5°E (~37cStokes or mm²/s). Opening time from ~100ms to ~150ms. Closing time from ~100ms to ~400ms.

COIL - Rated for continuous duty only in AC (alternate current). Coil in class "H" (+180°C) vacuum impregnated by polyester resin encapsulated into glass fibre reinforced PPS (polyphenylene-sulfide).

Ambient temperature from -10°C to +80°C.

Standard voltages 24/50Hz-110/50Hz (120/60Hz)-220/50Hz (240/60Hz)-230V/50Hz.

Voltage tolerance +10% -15%.

Electric plug connection (DIN 46340) or suitable for 3 poles connectors (DIN 43650).

Protection degree IP65 as per EN 60529 if the coil is duly fitted with its plug connector.

| Port size ISO 228 | Orifice size (mm) | Min P (bar) | Max pressure (bar) | | | | Kv (m³/h) | Series and type | | Power absorption | | | Seals | Notes | Weight (kg) | | | | | | |
|----------------------|-------------------------|-------------------|--------------------|----|---------|----|--------------|-----------------|-------|------------------|---------|-----------|-------|-------|----------------|-----|--------|-------|----|----|-------|
| | | | Gases | | Liquids | | | Valve | Coil | AC (VA) | | DC (W) | | | | | | | | | |
| | | | AC | DC | AC | DC | | | | Inrush | Holding | | | | | | | | | | |
| G 1/2 | 11,5 | 0 | 8 | - | 6 | - | 2,1 | L153D4 | Z114A | 44 | 24 | - | EPDM | 1-2-3 | 0,660 | | | | | | |
| G 3/4 | 17 | | | | | | | | | | | | | | | 8,5 | L153D5 | Z914A | 50 | 27 | 1,665 |
| G 1 | 22 | | | | | | | | | | | | | | | | | | | | |

NOTES - Seal: EPDM = Ethylene-propylene elastomer.

- Other voltages and frequencies on request.

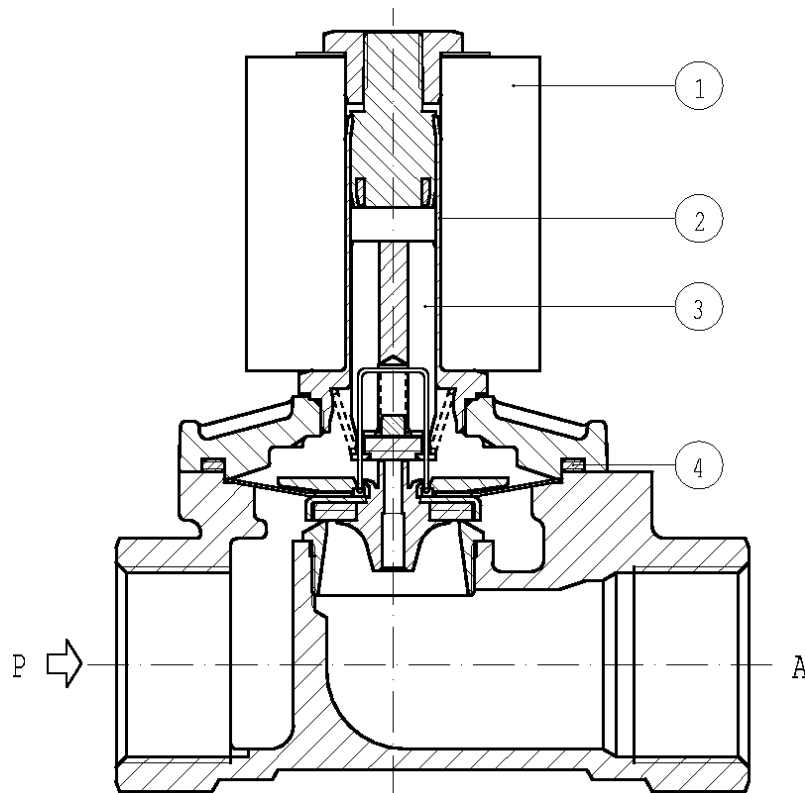
1 - For steam (+140°C) Pmax = 3 bar.

2 - The valves operate with vacuum (0 bar absolute) downstream.

3 - On request Z110A or Z923A coil encapsulated in PBT (Polybutylene-terephthalate) in class "F" (+155°C): maximum medium temperature +100°C, maximum ambient temperature +60°C.

SPARE PARTS

Series L153



Kit Description

Kit P.N.

Consisting of:

Diaphragm core kit L153D4 G1/2

G2836301

Core and sealing disc kit pos.3
OR guide assembly pos. 4

Diaphragm core kit L153D4 G3/4

G2836401

Core and sealing disc kit pos. 3
OR Guide assembly pos. 4

Diaphragm core kit L153D5 G1

G2836601

Core and sealing disc kit pos. 3
OR guide assembly pos. 4

Guide pipe assembly L153D4
Guide pipe assembly L153D5

2833201
2834901

Guide pipe assembly pos. 2
Guide pipe assembly pos. 2

Coil L153D4 - Z114A
Coil L153D5 - Z914A

Coil pos. 1
Coil pos.1

NB - THE VALIDITY OF REPORTED DATA IS REFERRED TO THE DATE OF ISSUE. POSSIBLE UPDATING ARE AVAILABLE ON REQUEST