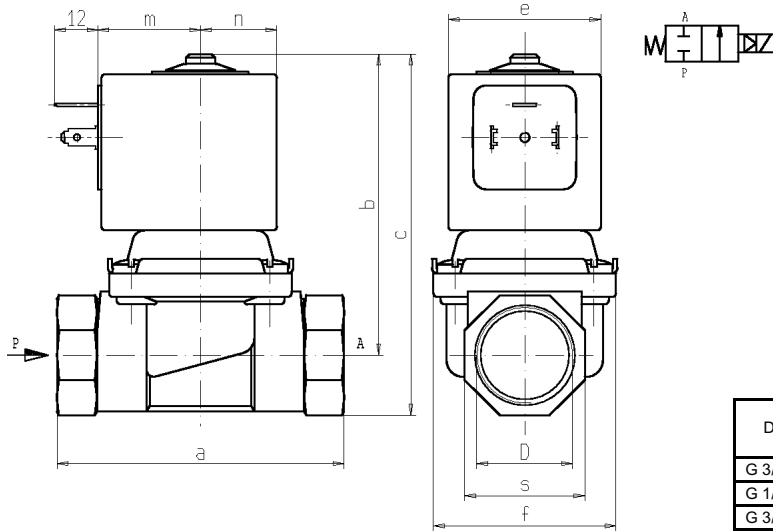




2/2 - SOLENOID VALVE - Normally closed (N.C.)

Series L133 - Coil Z110A - Z530A - Z923A - Z923E - G 3/8 + 1

ISO 9001



D	a	b	c	e	f	m	n	s	g
G 3/8	60	72	83	32	41	27	16	22	25,5
G 1/2	66	74,5	90	42	41	28	21	27	-
G 3/4	79	81	98	42	51	28	21	33	-
G 1	105	100	121	48,6	71	35	24,3	42	46

**FEATURES** - Pilot operated hung diaphragm "0 pressure" valve with full orifice. Designed for closed circuit hydraulic systems and for vessels draining. Suitable to shut off liquids and gaseous media compatible with the valve materials.

**MOUNTING** - In any position, vertical with coil upwards preferred.

**VALVE** - Brass body. Internal parts in brass and stainless steel. Seals as per table. Viscosity max 5° (~37 cStokes or mm²/s). Medium temperature from -10°C to +90°C (NBR) from 0°C to +130°C (FPM). Opening time from ~100ms to ~150ms. Closing time from ~100ms to ~400ms.

**COIL** - Rated for continuous duty in AC (alternate current) or DC (direct current). Coil in class "F" (+155°C) wound by class "H" wires (+180°C) vacuum impregnated by polyester resin and encapsulated into glass fibre reinforced PBT (polybutylene-terephthalate).

Ambient temperature from -10°C to +60°C.

Standard voltages 24/50Hz-110/50Hz (120/60Hz)-220/50Hz (240/60Hz)-230V/50Hz and 12-24 V DC.

Voltage tolerance +10% -15% AC et +10% -5% DC.

Electric plug connection (DIN 46340) or suitable for 3 poles connectors (DIN 43650).

Protection degree IP65 as per EN 60529 if the coil is duly fitted with its plug connector.

Port size ISO-228	Orifice Size (mm)	Min P (bar)	Max pressure (bar)				Kv (m³/h)	Series and type		Power absorption			Seals	Notes	Weight (kg)	
			Gases		Liquids			Valve	Coil	AC (VA)		DC (W)				
			AC	DC	AC	DC				Inrush	Holding					
G 3/8	10	0	10	3	10	3	1,5	L133B05	Z530A	23	14	9	NBR	1	0,440	
L133V05																
G 1/2	12,5						2,1	L133B04	Z110A	44	24	13	NBR			
															L133V04	
G 3/4	17		4,5	L133B04	Z923E	65	33	-	FPM							
										L133V04						
G 1	22		9	10	-	10	-	L133B06	Z923E	65	33	-	NBR		-	1,810
								L133V06								
		-		3	-	3	L133B06	Z923A	-	-	17	NBR				
							L133V06					FPM				

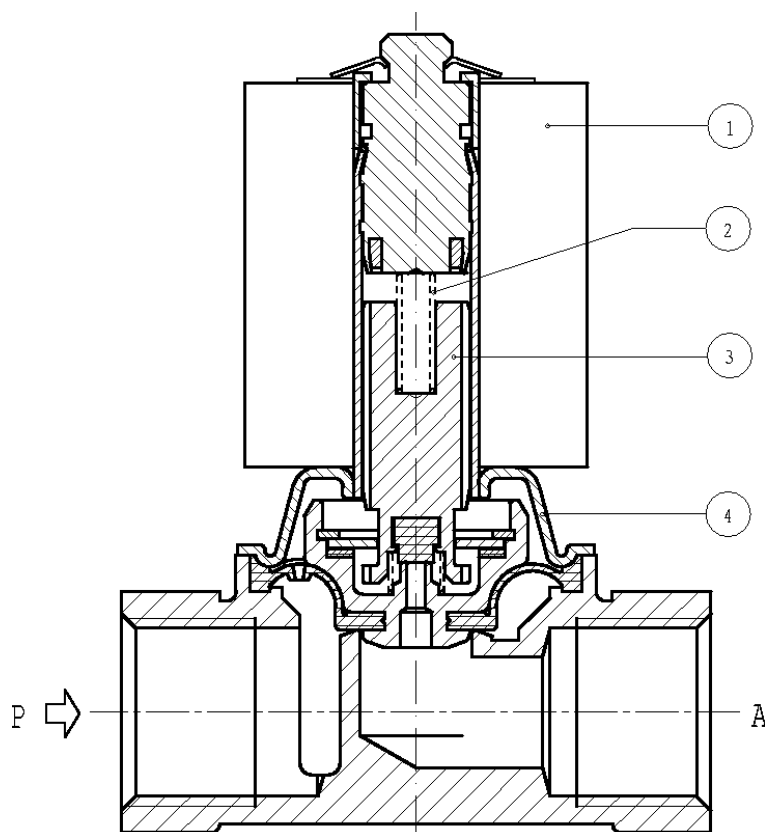
**NOTES** - Seal: NBR = Nitrile-butylene elastomer FPM = Fluoro-carbon elastomer  
 - Other voltages and frequencies on request.

- The nominal flow is guaranteed at pressure value ≥ 0,3 bar. Contact us in case of lower pressures.

1 - The valves fitted with 50 Hz coil can operate at 60 Hz but in this case the maximum pressure corresponds to the nominal value less 20%.

## SPARE PARTS

### Series L 133



#### Kit Description

#### Kit P.N.

#### Consisting of:

Core diaphragm kit G 3/8 L133B05	G2991801	Core return spring pos.2
G 3/8 L133V05	G2991802	Diaphragm assembly with core assembly pos.3
G 1/2 L133B04	G2990101	
G1/2 L133V04	G2990102	
G3/4 L133B04	G2990201	
G 3/4 L133V04	G2990202	
G 1 L133B06	G2991901	
G 1 L133V06	G2991902	
Core return spring kit L133B-V05 3/8	G2927601	n°10 core return springs pos. 2
L133B-V04 1/2	G2139901	
L133B-V04 3/4	G2918601	
L133B-V03 1	G2955801	
Guide pipe assembly L133B-V05 3/8	2549101	Guide pipe assembly pos. 4
Guide pipe assembly L133B-V04 1/2	2989201	Guide pipe assembly pos. 4
Guide pipe assembly L133B-V04 3/4	2989601	Guide pipe assembly pos. 4
Guide pipe assembly L133B-V06 1	2408202	Guide pipe assembly pos. 4
Coil Z110A L133B-V-04		Coil pos. 1
Coil Z530A L133B-V-05		Coil pos. 1
Coil Z923A L133B-V-06 (DC)		Coil pos. 1
Coil Z923E L133B-V-06 (AC)		Coil pos. 1

NB - THE VALIDITY OF REPORTED DATA IS REFERRED TO THE DATE OF ISSUE. POSSIBLE UPDATING ARE AVAILABLE ON REQUEST