

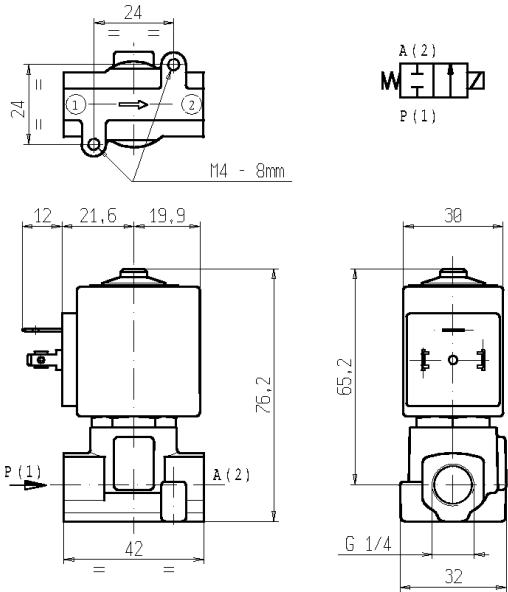


L121

2/2 - SOLENOID VALVE - Normally closed (N.C.)

Series L121 - Coil ZA30A - ZA30E - G 1/4

ISO 9001



FEATURES - Direct acting solenoid valve, suitable to shut off liquid and gaseous media compatible with the valve materials.

MOUNTING - In any position, vertical with coil upwards preferred.

VALVE - Brass body. Internal parts in stainless steel. Seals as per table. Models with seat in stainless steel. Medium temperature from -10°C to +170°C (RUBY), from 0°C +130°C (FPM). Viscosity max 5°E (~37cStokes or mm²/s). Opening time ~20ms. Closing time ~20ms.

COIL - Rated for continuous duty in AC (alternate current) or DC (direct current). Coil in class "F" (+155°C) wound by class "H" wires (+180°C) vacuum impregnated by polyester resin and encapsulated into glass fibre reinforced PBT (polybutylene-terephthalate).

Ambient temperature from -10°C to +50°C

Standard voltages 24/50Hz-110/50Hz (120/60Hz)-220/50Hz (240/60Hz)-230V/50Hz and 12-24 V DC.

Voltage tolerance +10% -15%. AC and +10% -5% DC

Electric plug connection (DIN 46340) or suitable for 3 poles connectors (DIN 43650).

Protection degree IP65 as per EN 60529 if the coil is duly fitted with its plug connector.

Port size ISO-228	Orifice size (mm)	Max pressure (bar)				Kv (m ³ /h)	Series and type		Power absorption			Seals	Notes	Weight (kg)
		Gases		Liquids			Valve	Coil	AC (VA)		DC (W)			
		AC	DC	AC	DC				Inrush	Holding				
G 1/4	2,3	20	10	20	10	0,15	L121C01	ZA30A	23	14	9	RUBY	1-2-3	0,300
	1,6	30	30	30	30	0,09	L121V02					FPM	3	
	2,3	20	16	20	16	0,15								
	3,2	12	4	12	4	0,28								
		-	7	-	7		ZA30E	-	-	12				

NOTES

- Seal: RUBY=Synthetic corundum. FPM=Fluoro-carbon elastomer
- The use of rigid sealings with gaseous fluids implies a slight leakage, generally limited with in 2 scc/min at 1 bar pressure.
- Other voltages and frequencies on request.

1 - Solenoid valve with stainless steel seat, suitable for steam up to 170°C (max pressure 8 bar).

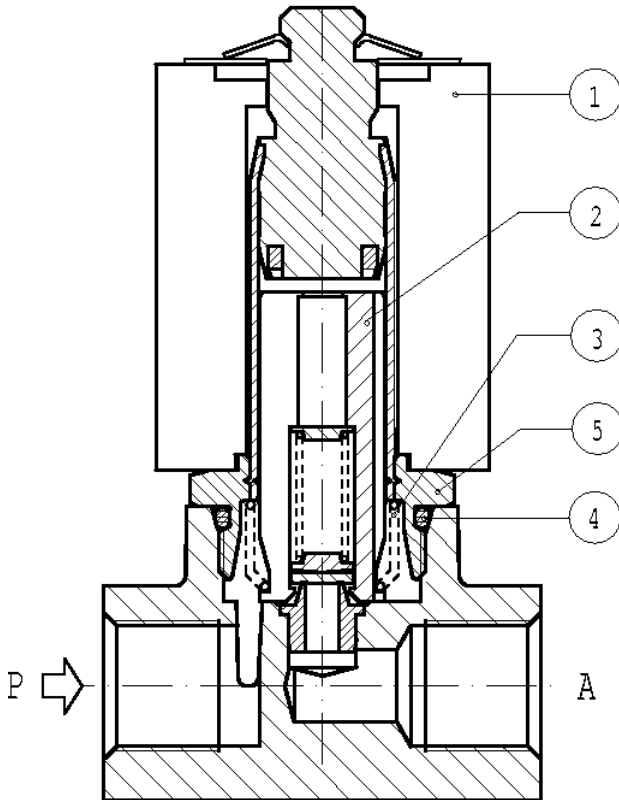
2 - On request coil ZA34A PPS (polyphenylene-sulfide) class "H" (+180°C), ambient temperature +80°C.

3 - Gasket between core armature and body in FPM.

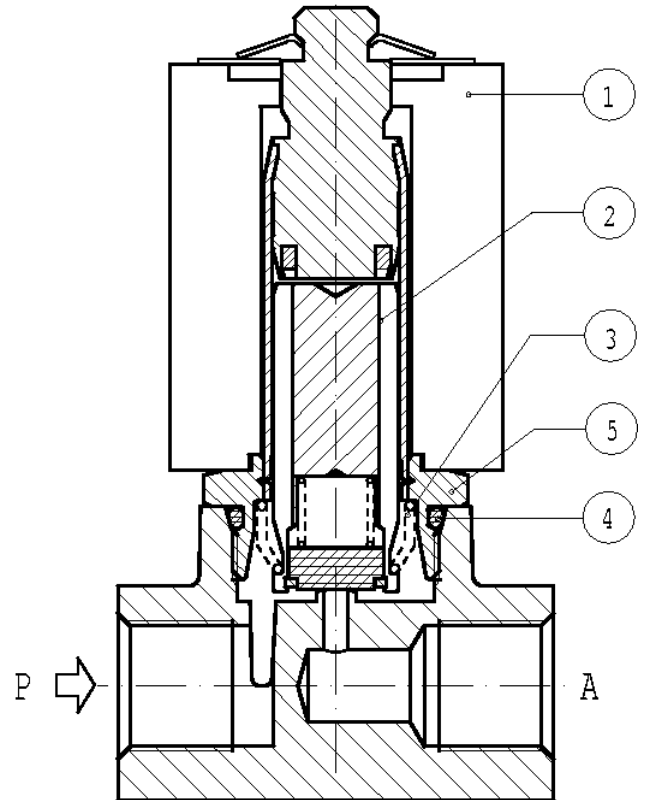
SPARE PARTS

Séries L121

L121 C01



L121 V02



Kit description

Core kit	L121C01 L121V02
Core spring kit	L121C01 L121V02
OR for guide assembly	
Guide pipe assembly	
Coil	ZA30A ZA30E

Kit P.N.

G3008801 G3022803
G3018901 G3022401
GU2424000017
3008301

Consisting of :

	Core pos. 2
	N. 10 Core return springs pos. 3
	N° 10 Guide group OR pos. 4
	Guide pipe assembly pos. 5
	Coil pos. 1

NB - THE VALIDITY OF REPORTED DATA IS REFERRED TO THE DATE OF ISSUE. POSSIBLE UPDATING ARE AVAILABLE ON REQUEST