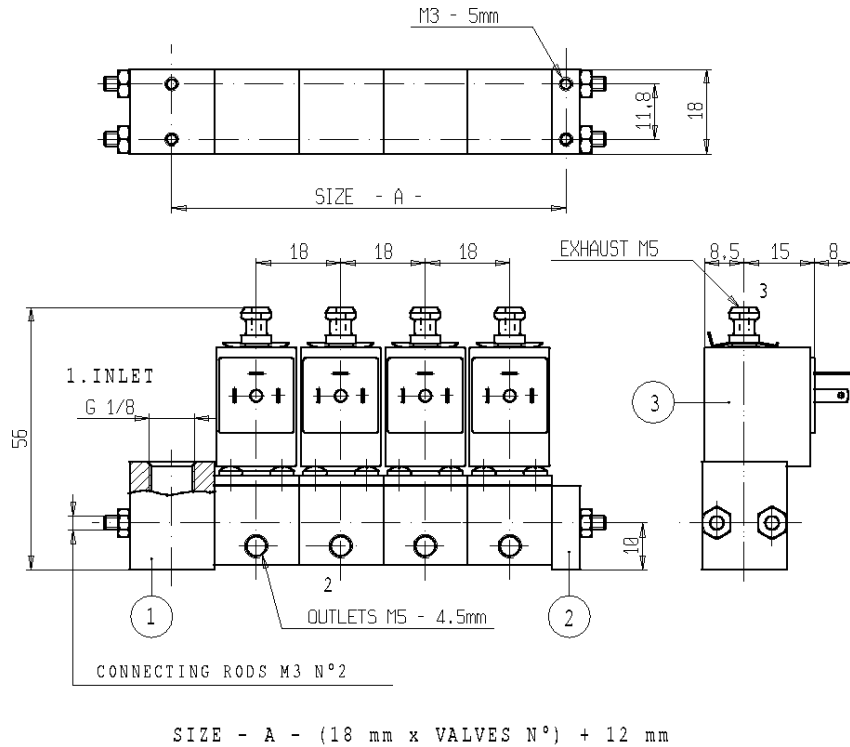




EXAMPLE OF BANK MOUNTING

V369 (3/2 N.C.)

ISO 9001



NON STANDARD

FEATURES - System designed to assemble banks of micro-solenoid valves with common inlet and single independent outlets. The feature consists of a through hole machined into the valve body that connects the common inlet of the plate group with the different components. The seal between the different micro-solenoid valves is guaranteed by a gasket supplied with the valve.

MOUNTING - For mounting in banks use connecting rods M3 (not supplied by us).

LIST OF COMPONENTS NECESSARY FOR THE MOUNTING OF THE A.M. BANK:		
DESCRIPTION	KIT P.N.	CONSISTING OF:
Plate group	G2575301	Inlet pos. 1 Outlet pos. 2 Gasket
Micro-solenoid valve	V369..	Micro-solenoid valve pos. 3

NOTES - For further details concerning the micro-solenoid valves, see the relative data sheet

NB - LA VALIDITE DES DONNEES INDIQUEES SE REFERE A LA DATE D'EMISSION. EVENTUELLES MISES A JOUR DISPONIBLES SUR DEMANDE