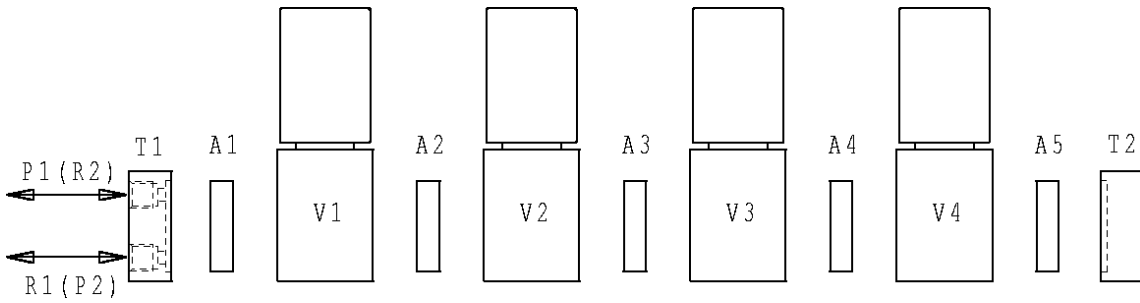




## EXAMPLE OF ASSEMBLING WITH PLATE GROUPS M5



### REFERENCE :

T1 = Inlet and exhaust plate  
 T2 = Closing plate  
 V = Micro-solenoid valve  
 A = Seal gasket or reverser plate  
 P (R) = Inlet or exhaust

#### - 1<sup>ST</sup> EXAMPLE - N.C. MODELS (V1-V2-V3-V4 = N.C.)

Inlet = P2  
 Exhaust = R2  
 Seal gasket = A1-A2-A3-A4-A5

#### - 3<sup>RD</sup> EXAMPLE - MIXED MODELS (V1-V2 = N.C. / V3-V4 = N.O.)

Inlet = P2  
 Exhaust = R2  
 Seal gasket = A1-A2-A4-A5  
 Reverser plate = A3

#### - 2<sup>ND</sup> EXAMPLE - N.O. MODELS (V1-V2-V3-V4 = N.O.)

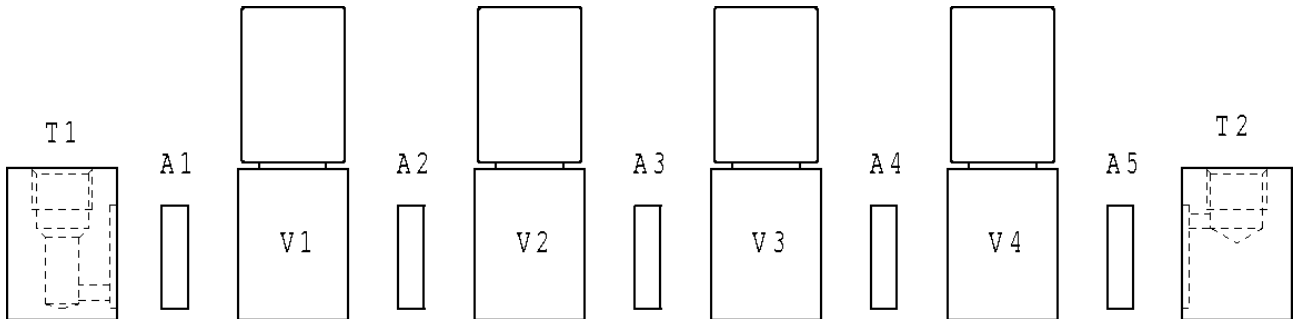
Inlet = P1  
 Exhaust = R1  
 Seal gasket = A1-A2-A3-A4-A5

#### - 4<sup>TH</sup> EXAMPLE - MIXED MODELS (V1-V2 = N.O. / V3-V4 = N.C.)

Inlet = P1  
 Exhaust = R1  
 Seal gasket = A1-A2-A4-A5  
 Reverser plate = A3

NON STANDARD

## EXAMPLES OF ASSEMBLING WITH PLATE GROUP G 1/8"



### REFERENCE :

T = Inlet and exhaust plate  
 V = Micro-solenoid valve  
 A = Seal gasket or reverser plate

#### - 1<sup>ST</sup> EXAMPLE - N.C. MODELS (V1-V2-V3-V4 = N.F.)

Inlet = T1  
 Exhaust = T2  
 Seal gasket = A1-A2-A3-A4-A5

#### - 3<sup>RD</sup> EXAMPLE - MIXED MODELS (V1-V2 = N.F. / V3-V4 = N.O.)

Inlet = T1  
 Exhaust = T2  
 Seal gasket = A1-A2-A4  
 Reverser plate = A3-A5

#### - 2<sup>ND</sup> EXAMPLE - N.O. MODELS (V1-V2-V3-V4 = N.O.)

Inlet = T2  
 Exhaust = T1  
 Seal gasket = A1-A2-A3-A4-A5

#### OR

Inlet = T2  
 Exhaust = T1  
 Seal gasket = A2-A4-A5  
 Reverser plate = A1-A3

NB - LA VALIDITE DES DONNEES INDIQUEES SE REFERE A LA DATE D'EMISSION. EVENTUELLES MISES A JOUR DISPONIBLES SUR DEMANDE