



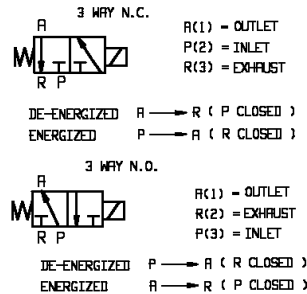
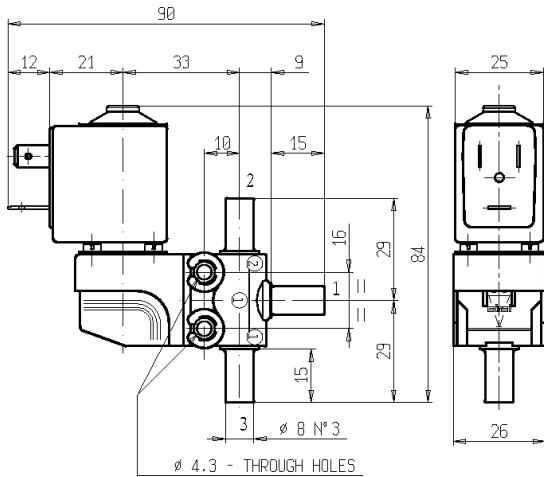
3/2 - DRY - MICRO SOLENOID VALVE

Normally closed (N.C.) - Normally open (N.O.)

Series D318 - Coil Z610A - Slip-on

D318

ISO 9001



FEATURES - Direct acting, total separation between the actuator and medium which remains in contact only with the valve body and the lever-seal. Designed to shut off liquid and gaseous media compatible with valve materials. Possibility of disassembling for inspection. The parts subject to sliding friction are duly coated by PTFE (Polytetrafluorethylene) based self lubricating material.

MOUNTING - In any position, vertical with coil upwards preferred.

VALVE - Moulded body in PEI (Polyetherimide). Lever seal in elastomer as per table. Medium temperature from -10°C to +100°C. Viscosity max 5 E° (~37 cStokes or mm²/s). Opening time ~25ms. Closing time ~25ms.

COIL - Rated for continuous duty in AC (alternate current) or DC (direct current). Coil in class "F" (+155°C) wound by class "H" wires (+180°C) vacuum impregnated by polyester resin and encapsulated into glass fibre reinforced PBT (polybutylene-terephthalate).

Ambient temperature from -10°C to +60°C.

Standard voltages 24-110-220-230V/50-60Hz AC and 12-24V DC.

Voltage tolerance +10% -15% AC and +10% -5% DC.

Electric plug connection (DIN 46340) or suitable 3 poles connectors.

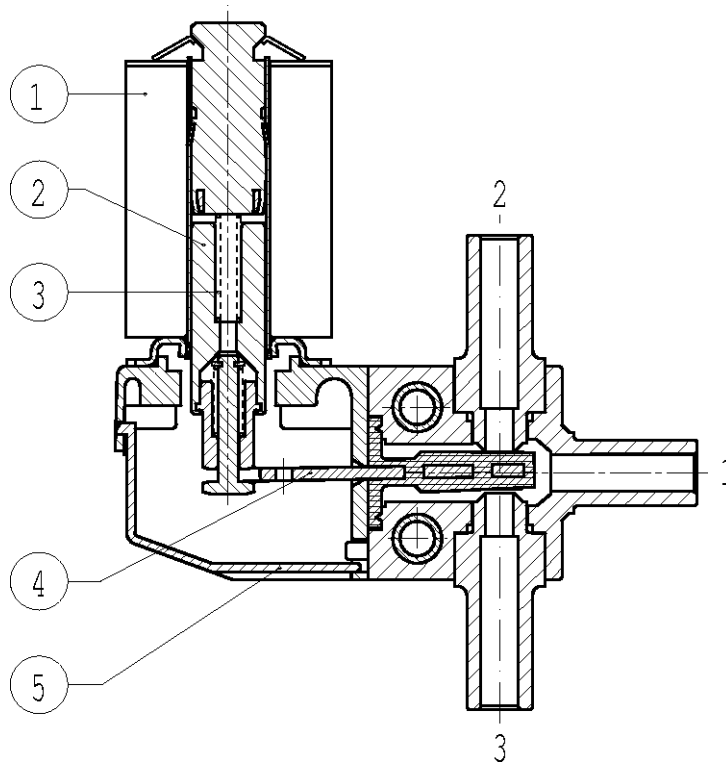
Protection degree IP65 as per EN 60529 if the coil is duly fitted with its plug connector.

Port size	Orifice size (mm)	Max pressure (bar)				Kv (m³/h)	Series and type		Power absorption			Seals	Use Notes	Weight (kg)
		Gases		Liquids			Valve	Coil	AC (VA)		DC (W)			
		AC	DC	AC	DC				Inrush	Holding				
Slip-on	3,4	1	1	1	1	0,30	D318D03C	Z610A	16	10	6	EPDM	1 N.C.	0,180
							D318S03C					VMQ		
							D318V03C					FPM		
		2,5	2	2,5	2		D318D03A					EPDM	N.O.	
							D318S03A					VMQ		
							D318V03A					FPM		

- NOTES**
- Seal: EPDM = Ethylene-propylene elastomer VMQ = Silicone elastomer FPM = Fluoro-carbon elastomer.
 - Other voltages and frequencies on request.
 - 1 - Suitable for diverting operation with 6 bar max inlet pressure at port 1 by using either port 2 or 3 as outlets free from throttling.

SPARE PARTS

Series D318



Kit description	Kit P.N.	Consisting of:
Core kit	D318-D-S-V-03C D318-D-S-V-03A G3049601 G3049602	Core pos. 2 Core return spring pos. 3
Lever-seal	D318-D03C-D03A D318-S03C-S03A D318-V03C-V03A 2815201 2815202 2815203	Lever-seal pos. 4
Cover	2883901	Cover pos. 5
Coil Z610A		Coil pos. 1

NB - THE VALIDITY OF REPORTED DATA IS REFERRED TO THE DATE OF ISSUE. POSSIBLE UPDATING ARE AVAILABLE ON REQUEST