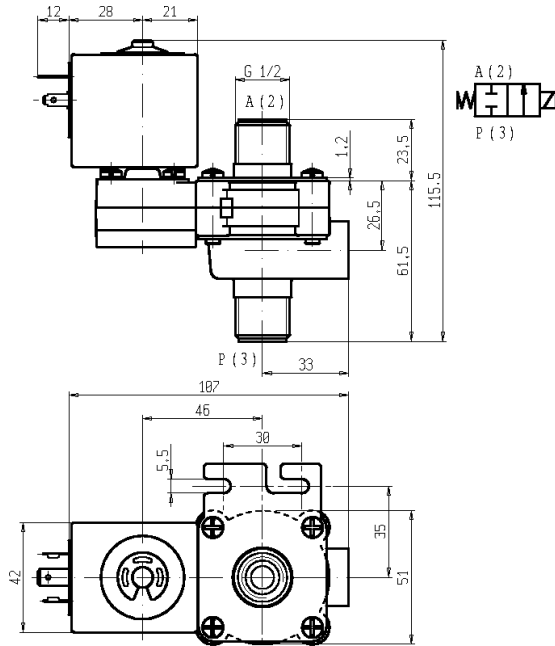




**SOLENOID VALVE - DRY**  
**2/2 - NC (Normally closed)**  
 Direct acting - Total isolation  
**G 1/2**

**D132**



► **GENERAL FEATURES**

Direct acting, total isolation solenoid valve: the actuator is totally isolated from the fluid so that the wetted parts are just the body and the diaphragm.

Possibility of disassembling for inspection.

Core duly coated by PTFE (polytetrafluoroethylene) based self lubricating material.

Suitable to shut off liquid and gaseous fluids (verify the compatibility of fluid with materials in contact).

Not suitable for use with dangerous fluids listed in Group 1, therefore they are free from CE marking in conformity with article 3 § 3 of the European Directive 97/23/EC (Pressure Equipment Directive).

► **TECHNICAL FEATURES**

Maximum allowable pressure (PS) 2 bar  
 Opening time ~30ms  
 Closing time ~30ms  
 Fluid temperature -10°C +90°C  
 Max viscosity 5°E (~37 cStokes or mm<sup>2</sup>/s)

► **MATERIALS IN CONTACT WITH FLUID**

Body PPS (Polyphenylene-sulfide) reinforced  
 Sealing SBR or EPDM or FPM

► **COIL**

Continuous duty ED 100%  
 Coil impregnation Polyester resin  
 Encapsulation material PBT (polybutylene-terephthalate) glass fibre reinforced  
 Coil insulation class F (155 °C)  
 Ambient temperature -10 °C +60 °C  
 Electric connenctions DIN 46340 – 3 poles connectors (DIN 43650)  
 Protection degree IP 65 (EN 60529) with plug connector  
 Voltages DC 12-24V (+10% -5%)  
 AC 24V/50Hz - 110V/50Hz (120V/60Hz) - 230V/50Hz (+10% -15%)  
 (Other voltages and frequencies on request).

Port size ISO 228	Orifice size (mm)	Differential pressure (bar)				Kv (m <sup>3</sup> /h)	Series and type		Power absorption			Sealings	Notes	Weight (kg)	
		Δp min	Δp max		Valve		Coil	AC (VA)		DC (W)					
			Gases	Liquids				Inrush	Holding						
			AC	DC	AC	DC									
G 1/2	9	0	1,6	0,25	1,6	0,25	1,6	D132A17 D132D17 D132V17	Z110A	44	24	13	SBR EPDM FPM	-	0,540

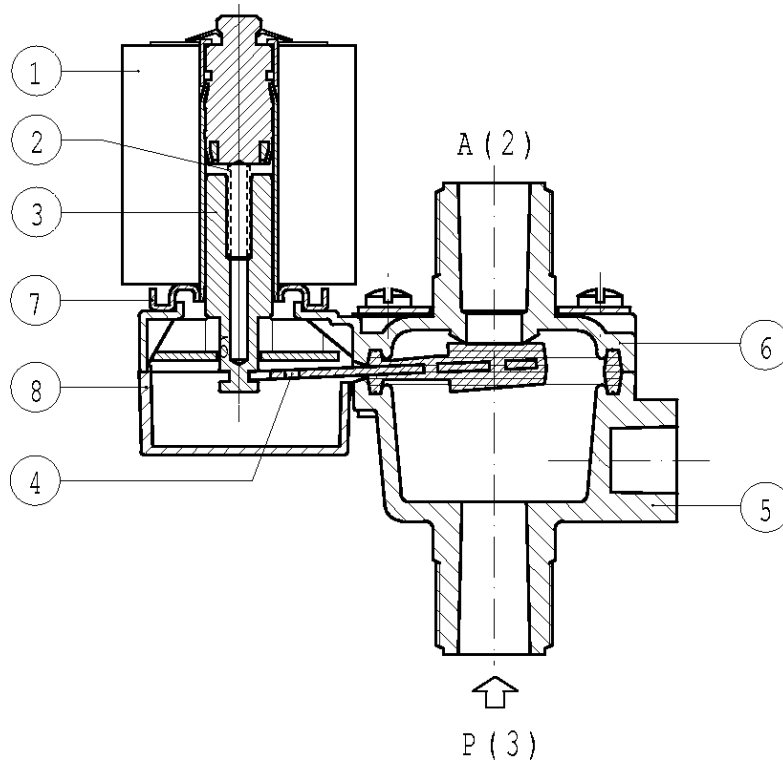
► **NOTES**

- Sealings : SBR = Elastomer styrol butadiene EPDM = Ethylene-propylene elastomer FPM = Fluoro-carbon elastomer

0110/0210

# D132

## ► SPARE PARTS



### Kit description

### Kit P.N.

### Consisting of:

Body kit		G2986603	Upper body pos.6 Lower body pos.5
Core kit		G2992801	Core return spring pos.2 Core pos.3
Lever seal	D132A17 D132D17 D132V17	3037304 3037303 3037301	Lever seal pos.4
Cover		2985701	Cover pos.8
Guide pipe assembly		2992601	Guide pipe assembly pos.7
Coil	Z110A		Coil pos. 1

## ► MOUNTING

- In case of disassembling for usual maintenance, the fixing screws have to be tightened at 1,5 Nm max torque.
- Solenoid valve can be mounted in any position; vertical with coil upwards preferred.