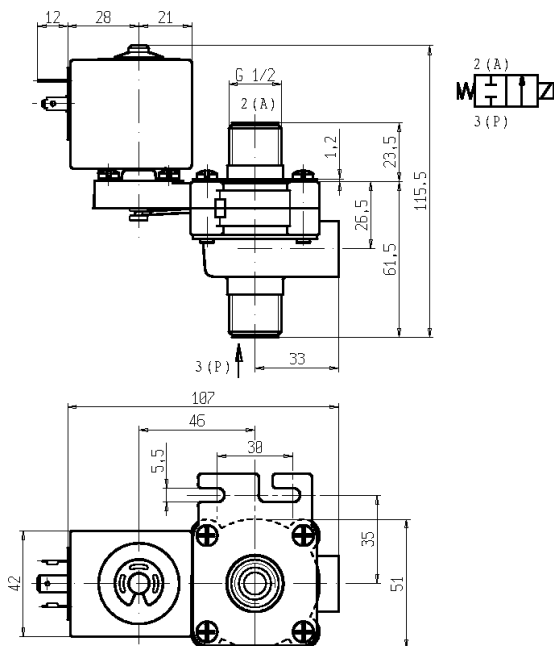




SOLENOID VALVE - DRY
2/2 - NC (Normally closed)
 Direct acting - Total isolation
G 1/2

D132V18



► **GENERAL FEATURES**

Direct acting, total isolation solenoid valve: the actuator is totally isolated from the medium so that the wetted parts are just the body and the diaphragm.

Possibility of disassembling for inspection.

Core duly coated by PTFE (polytetrafluoroethylene) based self lubricating material.

Suitable to shut off liquid and gaseous fluids (verify the compatibility of fluid with materials in contact).

Not suitable for use with dangerous fluids listed in Group 1, therefore they are free from CE marking in conformity with article 3 § 3 of the European Directive 97/23/EC (Pressure Equipment Directive).

► **TECHNICAL FEATURES**

Maximum allowable pressure (PS) 2 bar
 Opening time ~ 30ms
 Closing time ~ 30ms
 Fluid temperature -10°C +90°C
 Max viscosity 5°E (~37 cStokes o mm²/s)

► **MATERIALS IN CONTACT WITH FLUID**

Body PPS (Polyphenylene-sulfide) reinforced
 Sealing FPM

► **COIL**

Continuous duty ED 100%
 Coil impregnation Polyester resin
 Encapsulation material PBT (polybutylene-terephthalate) glass fibre reinforced
 Coil insulation class F (155°C)
 Ambient temperature -10 C° +60 °C
 Electric connenctions DIN 46340 - 3 poles connector (DIN 43650)
 Protection degree IP 65 (EN 60529) with plug connector
 Voltages DC 12-24V (+10% -5%)
 AC 24V/50Hz - 110V/50Hz (120V/60Hz) - 230V/50Hz (+10% -15%)
 (Other voltages and frequencies on request)

NON STANDARD

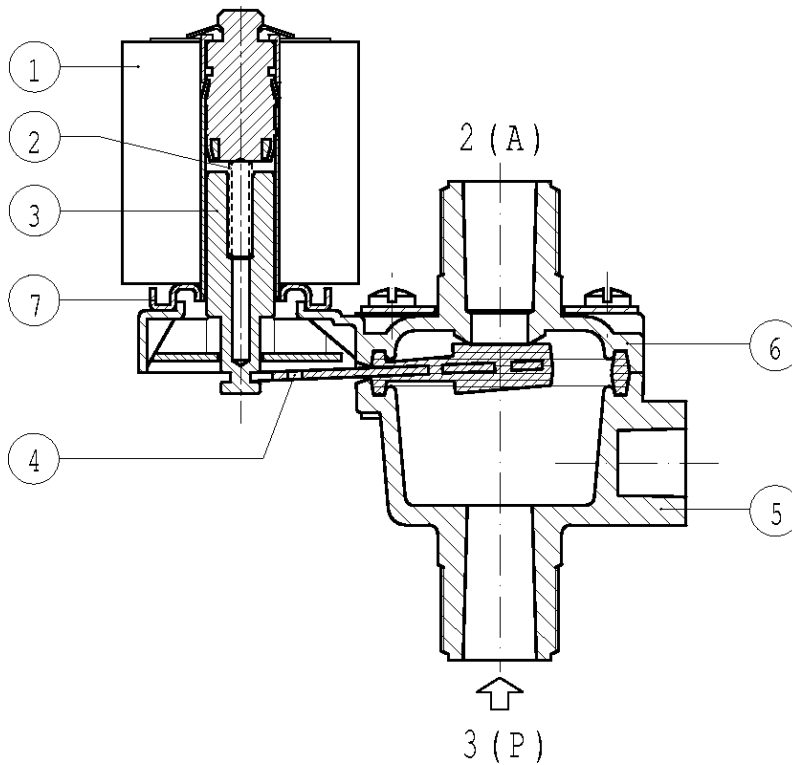
Port size ISO 228	Orifice size (mm)	Differential pressure (bar)				Kv (m ³ /h)	Series and type		Power absorption			Sealings	Notes	Weight (kg)	
		Δp min	Δp max		Valve		Coil	AC (VA)		DC (W)					
			Gases	Liquids				Inrush	Holding						
			AC	DC	AC	DC									
G 1/2	9	0	1,6	0,25	1,6	0,25	1,6	D132V18	Z110A	44	24	13	FPM	-	0,530

► **NOTES**

- Sealings : FPM = Fluoro-carbon elastomer

01100210

► SPARE PARTS



Kit description

Kit P.N.

Consisting of:

Body kit

G2986603

Upper body pos.6
Lower body pos.5

Core kit

G2992801

Core return spring pos.2
Core pos.3

Lever seal

3037301

Lever seal pos.4

Guide pipe assembly

2992601

Guide pipe assembly pos.7

Coil

Z110A

Coil pos. 1

► MOUNTING

- In case of disassembling for usual maintenance, the fixing screws have to be tightened at 1,5 Nm max torque.
- Solenoid valve can be mounted in any position; vertical with coil upwards preferred.